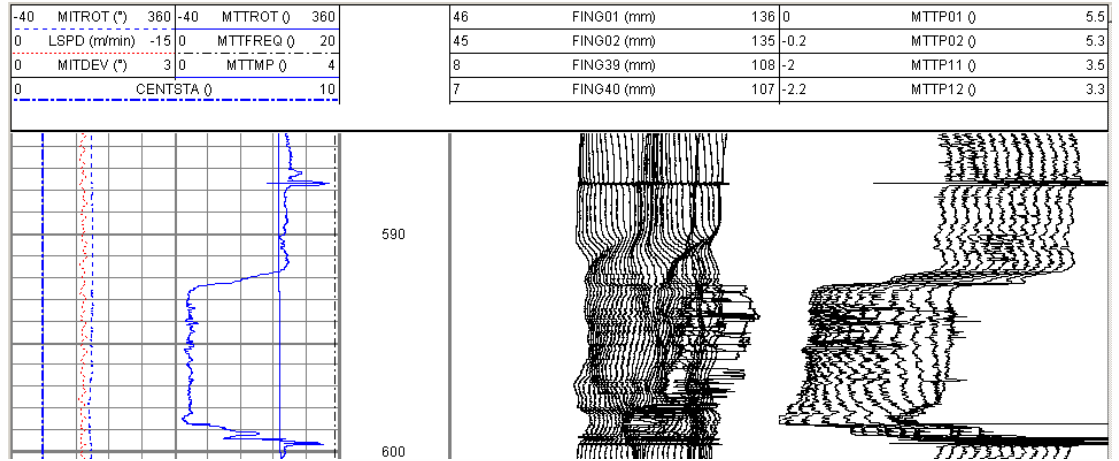


## THINNING WALL CHARACTERISATION FROM COMBINED MIT MTT DATA

Saxony Way  
 Blackbushe Business Park  
 Yateley  
 Hampshire,  
 GU46 6AB,  
 UK  
 Tel: +44 (0) 1252 862 200  
 Fax: +44 (0) 1252 862 349  
 www.sondex.com



In the log above the MIT data is showing damage in this joint of 7in (177.8mm) pipe; the reduction in phase values across the corresponding interval measured by the MTT indicates thinning of the wall. The MTT, when combined with MIT data, indicates whether metal loss is external or internal.

The log data is shown below in a snapshot from Sondex Well Integrity Visual Analysis, WIVA, 3d imaging software. The wall thickness and internal radii values are indicated by the whiskers.

